

Education is the cornerstone of individual and community success.

EDUCATION IMPACT

Allen Parish

In 2023, United Way of Southwest Louisiana significantly impacted the lives of 96,408 individuals and families through their various programs and Initiatives. With the help of volunteers and community partners, they worked tirelessly to provide those in need with Education, Health, Economic Mobility and other Basic Needs. They also provided emergency assistance and disaster relief services in times of crisis.

Of the 96,408 individuals and families impacted by United Way of Southwest Louisiana in 2023, 31,831 were assisted with Education Initiatives and programs to improve their access to educational resources and opportunities.



31,831 EDUCATIONAL SERVICES IN 2023



United Way of Southwest Louisiana recognizes that for many students and families, school is more than just a place of EDUCATION. We partner with schools, parents, counselors and anyone to engage families, reduce barriers to attendance, improve academic outcomes and spread information.

The Southwest Louisiana Team emphasizes any way to share the message as a way to support students in reaching key goals. Our efforts are designed to support academics, social-emotional, families and other developmental goals of each child in Southwest Louisiana.

Participation Rate Pizza Party!

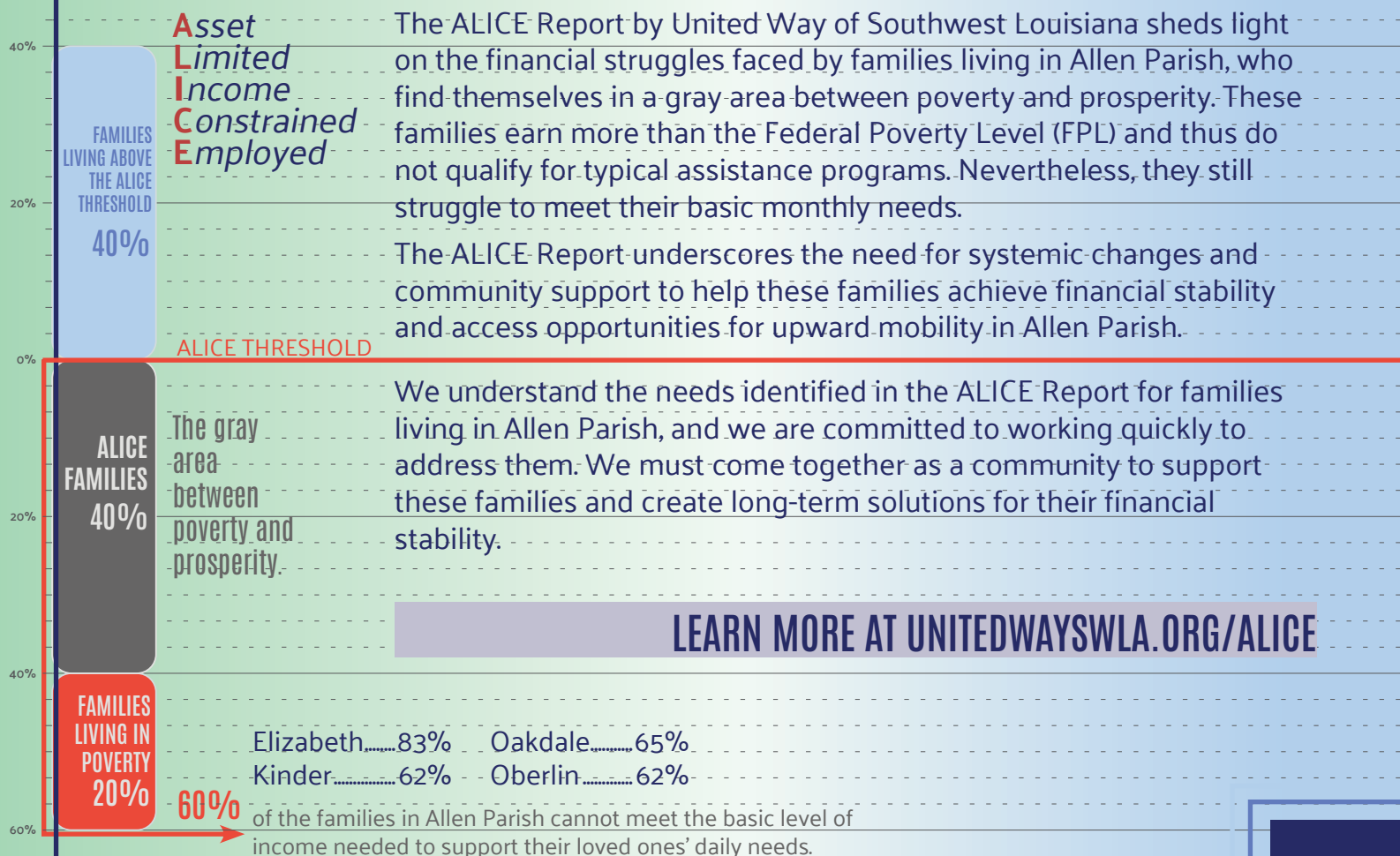
Each year our team searches for a way to be cheerleaders for your community at the start of campaign season. The school in Allen Parish with the highest participation rate for their campaign will get a pizza party!

Need logos or other materials?

See the online collection or contact us: unitedwayswla.org/campaignmaterials



ALICE Report Highlights Financial Struggles Faced by Allen Parish Families



LEARN MORE AT UNITEDWAYSWLA.ORG/ALICE

Education is the cornerstone of individual and community success.

EDUCATION IMPACT

Beauregard Parish

In 2023, United Way of Southwest Louisiana significantly impacted the lives of 96,408 individuals and families through their various programs and Initiatives. With the help of volunteers and community partners, they worked tirelessly to provide those in need with Education, Health, Economic Mobility and other Basic Needs. They also provided emergency assistance and disaster relief services in times of crisis.

Of the 96,408 individuals and families impacted by United Way of Southwest Louisiana in 2023, 31,831 were assisted with Education Initiatives and programs to improve their access to educational resources and opportunities.



31,831 EDUCATIONAL SERVICES IN 2023



United Way of Southwest Louisiana recognizes that for many students and families, school is more than just a place of EDUCATION. We partner with schools, parents, counselors and anyone to engage families, reduce barriers to attendance, improve academic outcomes and spread information.

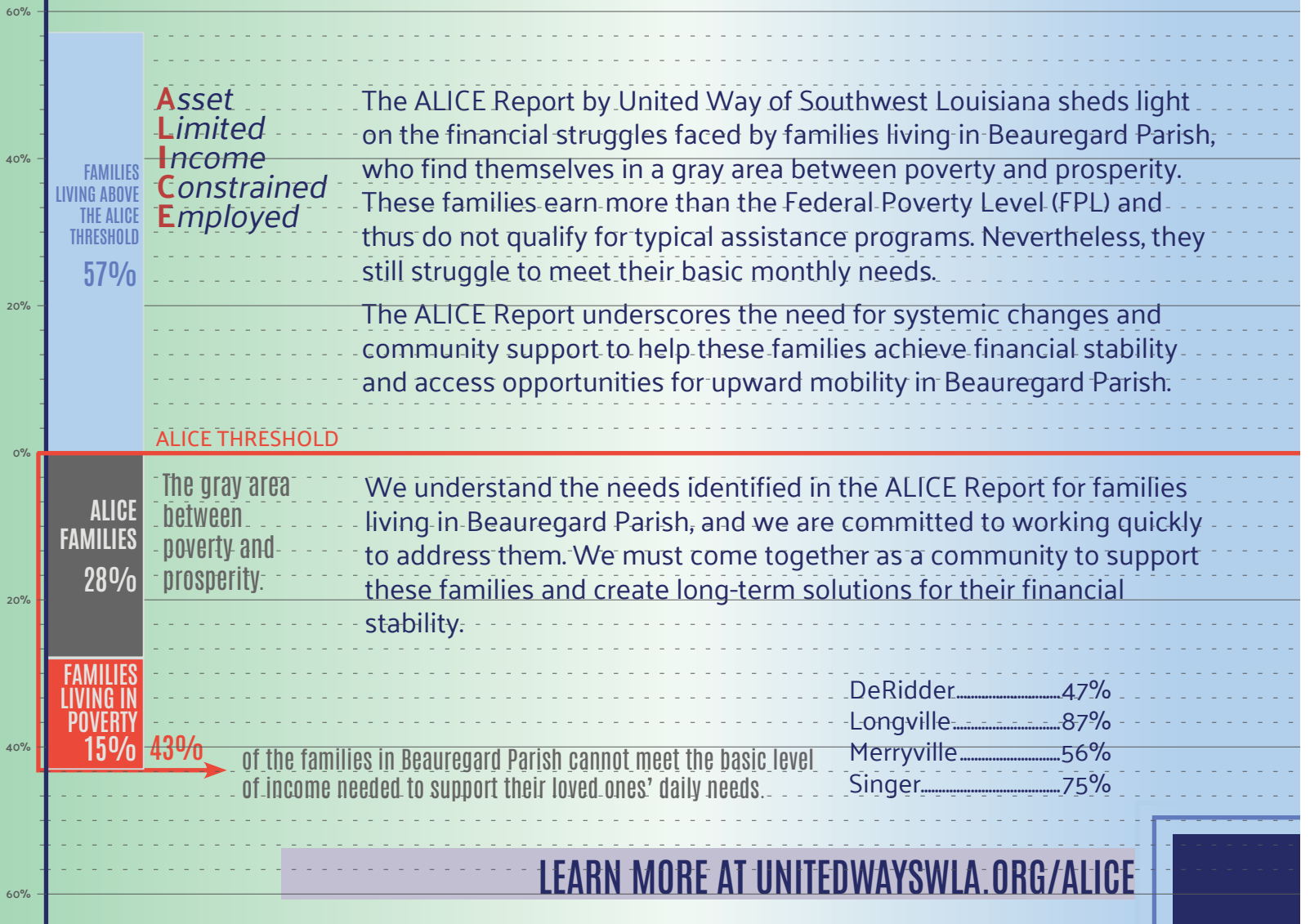
The Southwest Louisiana Team emphasizes any way to share the message as a way to support students in reaching key goals. Our efforts are designed to support academics, social-emotional, families and other developmental goals of each child in Southwest Louisiana.

Participation Rate Pizza Party!

Each year our team searches for a way to be cheerleaders for your community at the start of campaign season. The school in Beauregard Parish with the highest participation rate for their campaign will get a pizza party!

Need logos or other materials?

See the online collection or contact us: unitedwayswla.org/campaignmaterials



LEARN MORE AT UNITEDWAYSWLA.ORG/ALICE

Education is the cornerstone of individual and community success.

EDUCATION IMPACT

Calcasieu Parish

In 2023, United Way of Southwest Louisiana significantly impacted the lives of 96,408 individuals and families through their various programs and Initiatives. With the help of volunteers and community partners, they worked tirelessly to provide those in need with Education, Health, Economic Mobility and other Basic Needs. They also provided emergency assistance and disaster relief services in times of crisis.

Of the 96,408 individuals and families impacted by United Way of Southwest Louisiana in 2023, 31,831 were assisted with Education Initiatives and programs to improve their access to educational resources and opportunities.



31,831 EDUCATIONAL SERVICES IN 2023



United Way of Southwest Louisiana recognizes that for many students and families, school is more than just a place of EDUCATION. We partner with schools, parents, counselors and anyone to engage families, reduce barriers to attendance, improve academic outcomes and spread information.

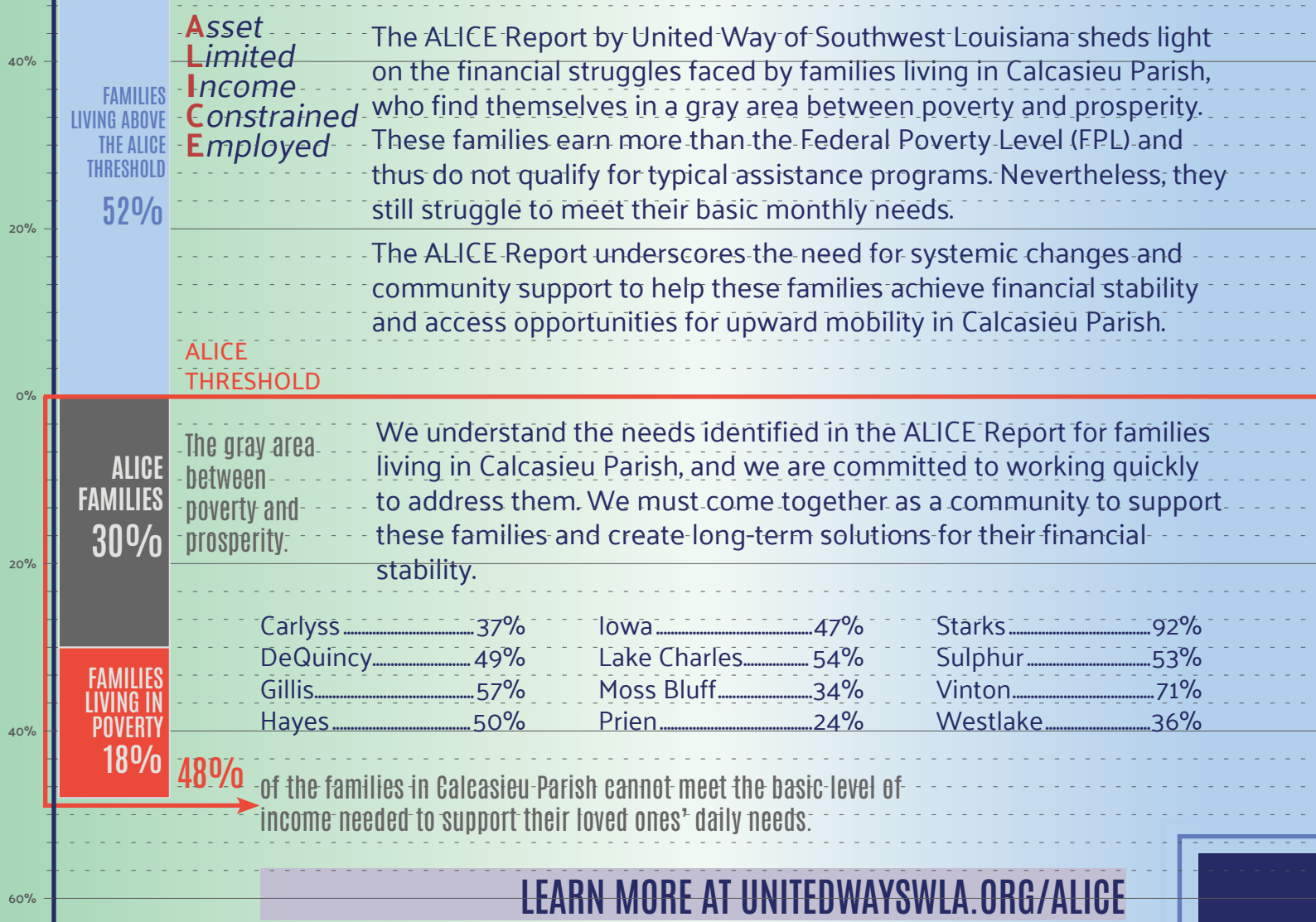
The Southwest Louisiana Team emphasizes any way to share the message as a way to support students in reaching key goals. Our efforts are designed to support academics, social-emotional, families and other developmental goals of each child in Southwest Louisiana.

Participation Rate Pizza Party!

Each year our team searches for a way to be cheerleaders for your community at the start of campaign season. The school in Calcasieu Parish with the highest participation rate for their campaign will get a pizza party!

Need logos or other materials?

See the online collection or contact us: unitedwayswla.org/campaignmaterials



Education is the cornerstone of individual and community success.

EDUCATION IMPACT

Cameron Parish

In 2023, United Way of Southwest Louisiana significantly impacted the lives of 96,408 individuals and families through their various programs and Initiatives. With the help of volunteers and community partners, they worked tirelessly to provide those in need with Education, Health, Economic Mobility and other Basic Needs. They also provided emergency assistance and disaster relief services in times of crisis.

Of the 96,408 individuals and families impacted by United Way of Southwest Louisiana in 2023, 31,831 were assisted with Education Initiatives and programs to improve their access to educational resources and opportunities.



31,831 EDUCATIONAL SERVICES IN 2023



United Way of Southwest Louisiana recognizes that for many students and families, school is more than just a place of EDUCATION. We partner with schools, parents, counselors and anyone to engage families, reduce barriers to attendance, improve academic outcomes and spread information.

The Southwest Louisiana Team emphasizes any way to share the message as a way to support students in reaching key goals. Our efforts are designed to support academics, social-emotional, families and other developmental goals of each child in Southwest Louisiana.



Participation Rate Pizza Party!

Each year our team searches for a way to be cheerleaders for your community at the start of campaign season. The school in Cameron Parish with the highest participation rate for their campaign will get a pizza party!

Need logos or other materials?

See the online collection or contact us: unitedwayswla.org/campaignmaterials



Asset Limited Income Constrained Employed

FAMILIES
LIVING ABOVE
THE ALICE
THRESHOLD
62%

The ALICE Report by United Way of Southwest Louisiana sheds light on the financial struggles faced by families living in Cameron Parish, who find themselves in a gray area between poverty and prosperity. These families earn more than the Federal Poverty Level (FPL) and thus do not qualify for typical assistance programs. Nevertheless, they still struggle to meet their basic monthly needs.

The ALICE Report underscores the need for systemic changes and community support to help these families achieve financial stability and access opportunities for upward mobility in Cameron Parish.

ALICE
THRESHOLD

ALICE
FAMILIES
32%

The gray area
between
poverty and
prosperity.

We understand the needs identified in the ALICE Report for families living in Cameron Parish, and we are committed to working quickly to address them. We must come together as a community to support these families and create long-term solutions for their financial stability.

FAMILIES
LIVING IN
POVERTY
6%

38%

Hackberry..... 30%

of the families in Cameron Parish cannot meet the basic level of income needed to support their loved ones' daily needs.

LEARN MORE AT UNITEDWAYSWLA.ORG/ALICE

Education is the cornerstone of individual and community success.

EDUCATION IMPACT

Jeff Davis Parish

In 2023, United Way of Southwest Louisiana significantly impacted the lives of 96,408 individuals and families through their various programs and Initiatives. With the help of volunteers and community partners, they worked tirelessly to provide those in need with Education, Health, Economic Mobility and other Basic Needs. They also provided emergency assistance and disaster relief services in times of crisis.

Of the 96,408 individuals and families impacted by United Way of Southwest Louisiana in 2023, 31,831 were assisted with Education Initiatives and programs to improve their access to educational resources and opportunities.

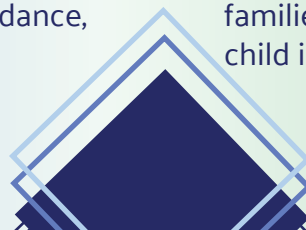


31,831 EDUCATIONAL SERVICES IN 2023



United Way of Southwest Louisiana recognizes that for many students and families, school is more than just a place of EDUCATION. We partner with schools, parents, counselors and anyone to engage families, reduce barriers to attendance, improve academic outcomes and spread information.

The Southwest Louisiana Team emphasizes any way to share the message as a way to support students in reaching key goals. Our efforts are designed to support academics, social-emotional, families and other developmental goals of each child in Southwest Louisiana.



Participation Rate Pizza Party!

Each year our team searches for a way to be cheerleaders for your community at the start of campaign season. The school in Jeff Davis Parish with the highest participation rate for their campaign will get a pizza party!

Need logos or other materials?

See the online collection or contact us: unitedwayswla.org/campaignmaterials



FAMILIES LIVING ABOVE THE ALICE THRESHOLD
45%

Asset Limited Income Constrained Employed

The ALICE Report by United Way of Southwest Louisiana sheds light on the financial struggles faced by families living in Jeff Davis Parish, who find themselves in a gray area between poverty and prosperity. These families earn more than the Federal Poverty Level (FPL) and thus do not qualify for typical assistance programs. Nevertheless, they still struggle to meet their basic monthly needs.

The ALICE Report underscores the need for systemic changes and community support to help these families achieve financial stability and access opportunities for upward mobility in Jeff Davis Parish.

ALICE THRESHOLD

ALICE FAMILIES
37%

The gray area between poverty and prosperity.

We understand the needs identified in the ALICE Report for families living in Jeff Davis Parish, and we are committed to working quickly to address them. We must come together as a community to support these families and create long-term solutions for their financial stability.

LEARN MORE AT UNITEDWAYSWLA.ORG/ALICE

FAMILIES LIVING IN POVERTY
18%

Elton	68%	Lake Arthur.....	68%
Fenton.....	86%	Roanoke.....	87%
Jennings.....	62%	Welsh.....	46%

55%

of the families in Jeff Davis Parish cannot meet the basic level of income needed to support their loved ones' daily needs.